

The Community Foundation for Ireland recently launched its revamped website – [www.communityfoundation.ie](http://www.communityfoundation.ie). The site includes information on The Community Foundation for Ireland (including its leadership, governance and compliance, annual reports, financial statements and salary information). There is also a section with practical advice and information for donors, as well as stories and research reports.

## Events

The Community Foundation for Ireland regularly hosts events for donors and those with an interest in philanthropy. These include its **Opportunities for Philanthropy** series of workshops, including an **Opportunities for Philanthropy** seminar, looking at the case for supporting women and girls in mid-October and an **Opportunities for Corporate Philanthropy** workshop on October 29th. All such events are held under the Chatham House rule and provide the opportunity to hear about emerging trends in charitable giving, as well as optimising impact and outcomes. The Foundation will also host The Philanthropist of the Year Awards in January 2015.

If you would like to receive notification of future events, please contact Jackie Harrison, Head of Development at [jharrison@foundation.ie](mailto:jharrison@foundation.ie) or **01 874 7354**



32 Lower O'Connell Street, Dublin 1, Ireland.

Tel: (01) 874 7354 Fax: (01) 874 7637

Email: [info@foundation.ie](mailto:info@foundation.ie) [www.communityfoundation.ie](http://www.communityfoundation.ie)

The Community Foundation for Ireland Ltd. Charity No. CHY 13967.  
Registered Office: One Spencer Dock, North Wall Quay, Dublin 1.  
Company Limited by Guarantee.



Empowering people who want to make a difference



## Giving back to your roots – breaking barriers through art



On a visit to their home town in Sligo, a Community Foundation for Ireland donor called into the Model Arts Centre in Sligo and became really interested in their work. The Community Foundation facilitated some meetings between the donor family and the Model Arts Centre and the family opted to support an exciting and interactive public community arts project.

“This is the best of what community art can do – engaging people at the heart of the community, who have never been exposed to this level of public art before. The project literally brings art into the social spheres of these communities and goes right into the hearths and homes of the residents of these disadvantaged estates. This engagement has broken down the barriers between these communities and The Model’s outreach programme. We know that this project is making a meaningful and lasting impact and it has opened their eyes to the way in which a broader engagement with the arts can change their lives.”

*Marie-Louise Blaney, The Model Arts Centre*



## Collaborative funding opportunities

A growing dimension to the work of The Community Foundation is collaborating with other charitable organisations, including charitable trusts and foundations, to administer Funds on their behalf, drawing on our experience in operating endowed funds or our expertise in grant-making at a grassroots level.

Such collaborative partnerships have included The Mount Street Club Trust in relation to The Community Growers Fund, the OLC Trust Fund in relation to its Fund to assist vulnerable women and the Tony Ryan Fund for Tipperary, which we manage.

We also engage in a number of collaborative strategic funding initiatives with other trusts including the Former Offenders Fund with The St Stephen’s Green Trust, as well as the Parenting Support Initiative (supporting parents of children from birth to three years) in association with The Katharine Howard Foundation. The Older Persons’ Fund was set up through the support of The Atlantic Philanthropies.



Trustees, directors and philanthropic funders may be interested in exploring opportunities for collaboration:

- ✦ When there are shared funding interests.
- ✦ If a trust or foundation does not have any administrative resources of its own.
- ✦ The trust or foundation is getting started and “learning the ropes” or indeed, is long established and would like to revitalise or refresh their philanthropy.
- ✦ The trust or foundation is thinking about its longer term future and is looking for a sustainable way to maintain its funding or to spend down its resources.
- ✦ Trustees or directors are reviewing the governance of the resources of the organisation and how to best meet regulatory requirements.
- ✦ The trust or foundation is interested in collaborative funding and optimising resources and outcomes.

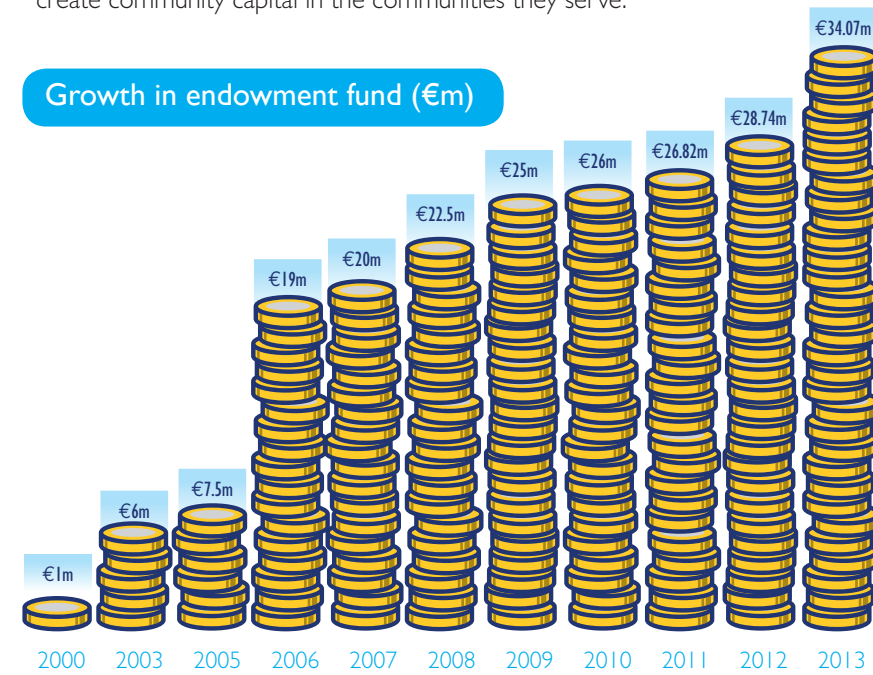
If you would be interested in discussing how your organisation might collaborate with ours, please contact Jackie Harrison at [jharrison@foundation.ie](mailto:jharrison@foundation.ie) or **01 874 7354**.



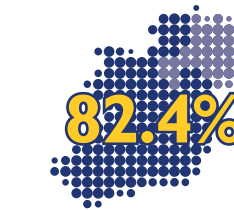
## Long-term philanthropic funds are growing

The endowment fund is the long-term investment fund of The Community Foundation for Ireland and has steadily grown since the Foundation was set up in 2000. A hallmark of community foundations throughout the world is that they set up a long term endowed fund to create community capital in the communities they serve.

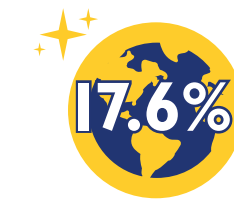
### Growth in endowment fund (€m)



### Geographic breakdown of The Community Foundation for Ireland support



82.4% (€2.914m) supported projects and charities in Ireland.



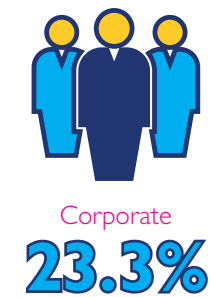
17.6% (€0.621m) of 2013 grants went outside Ireland.

€0.518m went on strategic Impact Grants at a national level.



### Who gives through The Community Foundation for Ireland?

Who are our donors? Breakdown of donor funds in 2013 (% of total donor advised funds at The Community Foundation for Ireland)



Priorities of Community Foundation for Ireland donors  
(services and benefits of most importance to donors)

1<sup>ST</sup>



Integrity and trustworthiness

2<sup>ND</sup>



Quality of staff and donor services

3<sup>RD</sup>



Ease of setting up a fund

4<sup>TH</sup>



Administration/management of their fund

5<sup>TH</sup>



Expertise in grant-making

Other benefits:



The quality of projects sourced



Investment strategy and performance



Tax efficiency of setting up a fund

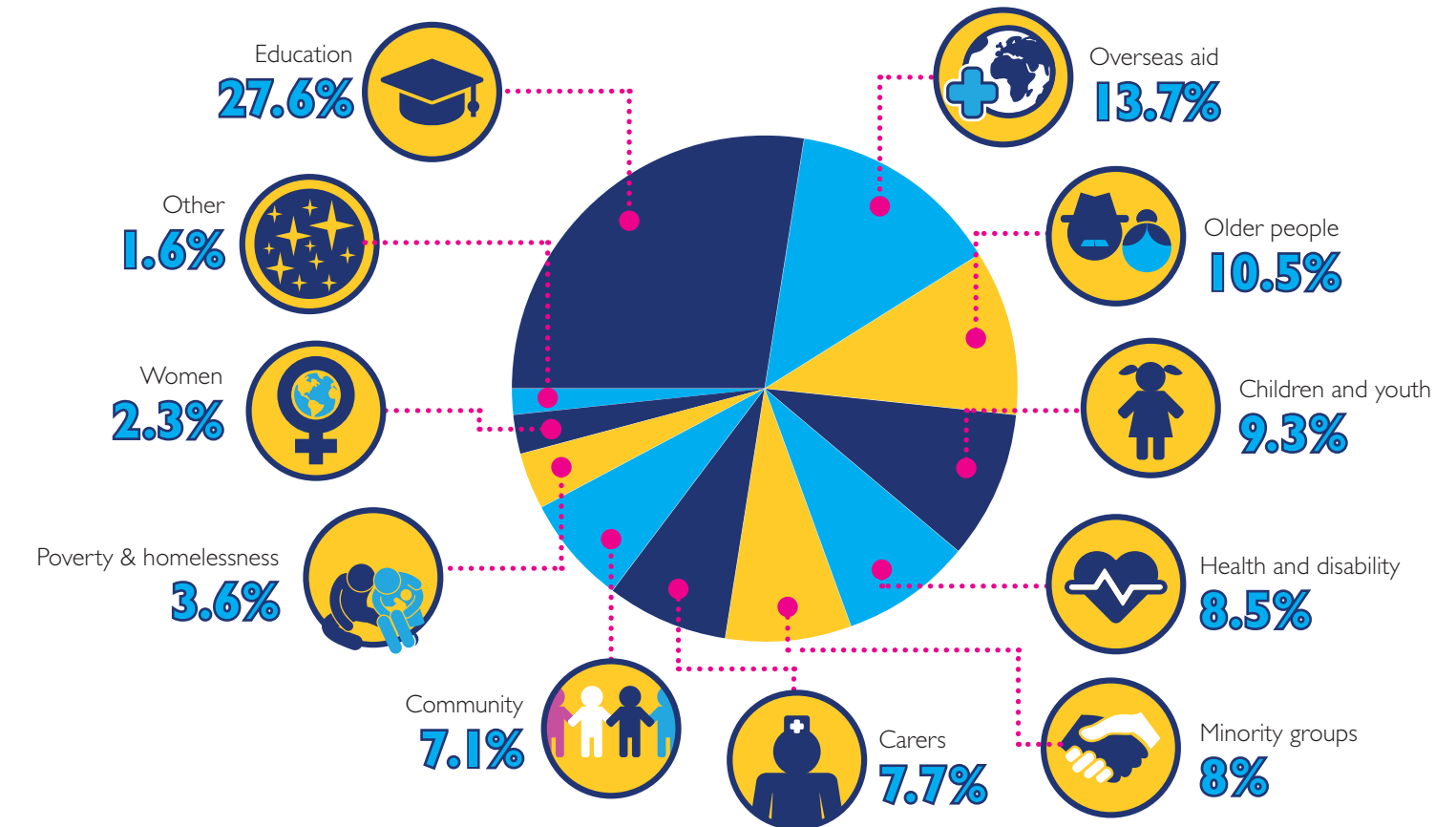


Receiving feedback on grant-making



Preserving anonymity as a donor

### Areas supported by The Community Foundation for Ireland grant-making in 2013







Presentation of Philanthropist of the Year Award to Keith Duffy by Tina Roche, Chief Executive - Community Foundation for Ireland, in recognition of his work with Irish Autism Action.

## New research on entrepreneurs and philanthropy

The Community Foundation for Ireland is currently undertaking research, supported by AIB Private Banking, exploring how Irish entrepreneurs view philanthropy,

as well as insights into the appetite, routes to, barriers for and changes that would support greater philanthropy by Irish entrepreneurs. A survey has been undertaken by forty-nine entrepreneurs and in-depth interviews have been carried out with ten entrepreneurs and five key stakeholders.

The research will provide much needed insights into how philanthropic donors (and potential donors) view the supporting environment required to facilitate greater philanthropic investment and engagement on the part of entrepreneurs, including models of engagement, tax incentives and types of giving (for example, the contribution of shares as well as cash).

The research has been undertaken by the Sia Group on behalf of The Community Foundation for Ireland.

The findings of the report will be available early in 2015. If you would be interested in receiving a copy of the report and/or attending a launch event, please contact Jackie Harrison, Head of Development at: [jharrison@foundation.ie](mailto:jharrison@foundation.ie) or 01 874 7354.

## Starting a fund



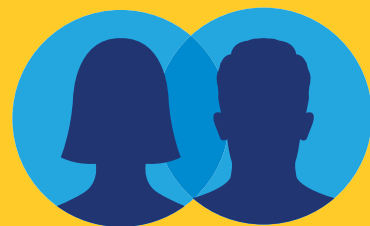
€25,000

Community foundations are pioneers of Donor Advised Funds. A donor makes a gift (€25,000 is normally the recommended initial sum) in cash or shares. Management fees are agreed up front and there are no hidden charges. Following recent changes in relation to tax relief for charitable donations, any eligible tax relief on that donation accrues directly to the Fund.



## Save time & money

As the name suggests – with a Donor Advised Fund, the donor advises how they wish to make their charitable donations, while The Community Foundation handles the rest. A fund delivers a significant cost and time saving compared with setting up a charitable foundation or trust. Our staff handles all administration, carries out due diligence on the charities you choose to support, prepares a portfolio of options for you to fund and measures the impact of your funding.



## Privacy & anonymity

Many of our donors choose to give through a Donor Advised Fund because it safeguards their privacy and anonymity. It ensures that they can support non-profit organisations and charitable causes in a low-key way, whilst at the same time building a good relationship with the projects they support and receiving clear feedback as to the outcome of their donation.

## About The Community Foundation for Ireland

In 1914, a Cleveland lawyer and banker Frederick H. Goff established the first community foundation, creating a model of philanthropy centred around participating in the community. During the past hundred years the philosophy of Community Foundation has been embraced, spreading initially throughout North America and then globally.

Today more than 1,750 community foundations worldwide manage over 40 billion in assets and distribute grants of \$4.5 billion annually. The Community Foundation for Ireland was set up in 2000. Within The Foundation, we believe in the power of philanthropy to deliver just and progressive social change. By issuing grants on their behalf, we empower people and organisations who want to make a difference in their community through a proven model of philanthropy that is based on trust, effectiveness and impact.



President Michael D. Higgins, Patron of The Community Foundation for Ireland addressed the Centennial Celebration of the Global Community Foundation movement in Dublin in May 2014.

## Engaging the next generation



An anonymous donor with a family fund at The Community Foundation for Ireland describes how she first became interested in taking a more structured approach to charitable giving:

"I first became interested in philanthropy when I realised that giving was not giving back to me. Giving money, as we do by standing order or something like that, wasn't enough and felt a little meaningless. So I decided to get more structured and more involved."

A key objective of this family was to engage the next generation –

"We wanted our children to have their own involvement, separate from ours so that they can make their own minds up and become more sensitive to the outside world. The Community Foundation is a wonderful tool particularly the family fund. It is like giving them another set of parents; a structure that they can work with and grow in. It is a one-stop-shop for everything to do with charity. For someone who doesn't know where to turn – who to give to or how, it is absolutely perfect."